



RESIDENCE

62 Dalzell Drive, Motherwell, ML1 2DA

www.residencestateagents.co.uk



Viewing by appointment with Residence Hamilton
T: 01698 444333 | E: hamilton@residenceestateagents.co.uk | A: 34 Cadzow Street, Hamilton, ML3 6DG





2 Bedroom | 1 Public Room | 1 Bathroom

Situated within a well-maintained modern development, this spacious top-floor apartment offers bright, well-proportioned accommodation ideally suited to first-time buyers, downsizers, and investors.

The property is accessed via a secure communal entrance and welcomes you into a generous reception hallway with useful storage. The impressive lounge is flooded with natural light from French doors opening to a Juliet-style balcony, creating a bright and inviting living space with attractive open outlooks.

The fitted kitchen provides excellent worktop and storage space, with ample room for a range of appliances. There are two well-proportioned double bedrooms, both benefiting from fitted wardrobes. The spacious principal bedroom further benefits from an en suite shower room, while the second bedroom provides flexible accommodation and could be used as a guest room, home office, or additional living space to suit individual requirements. A modern bathroom completes the accommodation and features a three-piece suite.

Further benefits include electric heating, double glazing, a secure entry system, well-maintained communal areas, and allocated residents' parking within a private residents' car park, accessed via a secure barrier-controlled entrance for added convenience and peace of mind.

Conveniently located within easy reach of Motherwell town centre, the property enjoys excellent access to local amenities, supermarkets, leisure facilities, and highly regarded transport links, including nearby rail services and motorway connections providing straightforward commuting throughout Central Scotland.



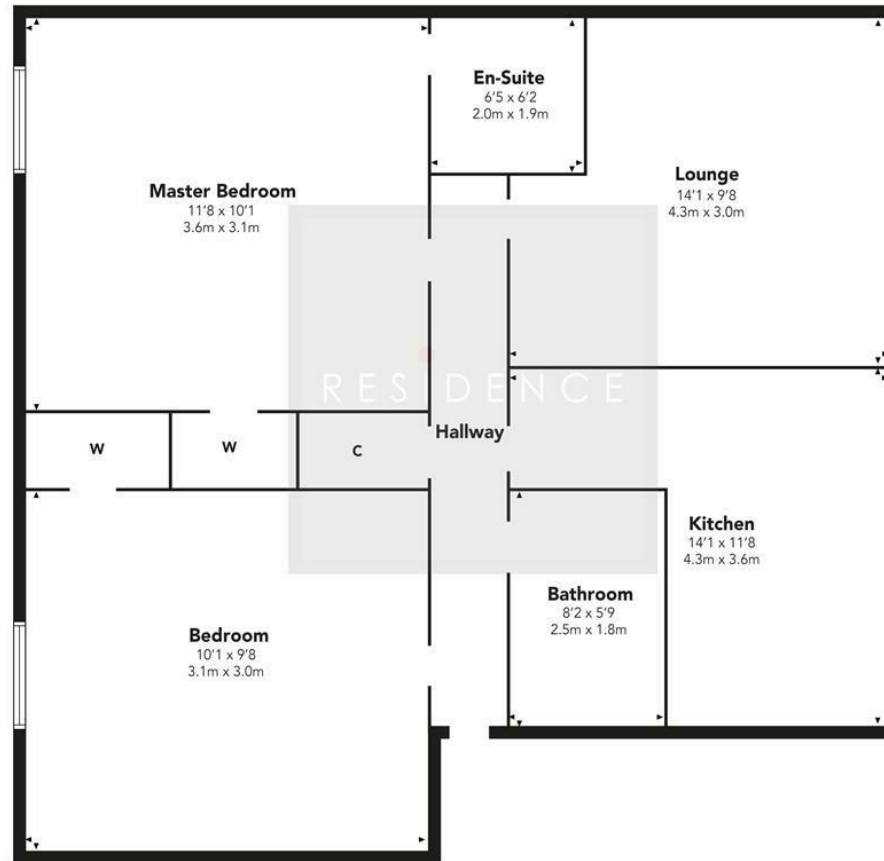
656.59 sq ft | EER = C



RESIDENCE



Dalzell Drive



Floor Plan measurements are approximate and are for illustrative purposes only. While we do not doubt the floor plans accuracy, we make no guarantee, warranty or representation as to the accuracy and completeness of the floor plan. You or your advisors should conduct a careful, independent investigation of the property to determine to your satisfaction as to the suitability of the property for your space requirements.

Produced by Plush Plans Ltd

We believe these details to be accurate; however, they do not form any part of a contract. Fixtures and fittings are not included unless specified in the enclosed. Photographs are for general information and it must not be inferred that any item is included for sale with the property. All distances and measurements are approximate. Floorplans may not be to scale and are for illustration purposes only.